



Truck Tires

2025

ATTAR OR A



All-weather tires designed for all types of truck axles.

The tire basis is a high-strength all-metal frame, which sustains overloads without any risks of irreversible deformations.

- All-position model, which can be mounted on any axles, for commercial and open-cut mining vehicles.
- Elasticity characteristics are retained in a wide temperature range from -45 up to +55 °C
- High-tensile rubber compound effectively protects tires from strain and improves their road adherence.

Sizes

12.00	R 20	156/153F
315/80	R 22.5	156/150F

ATTAR MIX 01 A



All-weather tires designed for all types of truck axles, driving on all roads, including off-roads (not heavy).

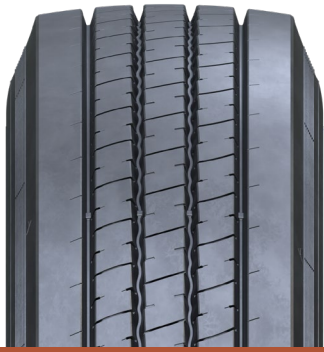
A reliable all-metal tire frame ensures safe and effective operation throughout the service life.

- All-position model, which can be mounted on any axles, for commercial and open-cut mining vehicles.
- High-tensile rubber compound effectively protects tires from strain and improves their road adherence.
- Reliable grip and steerability are achieved due to sharp edges of the central ribs, which provide for a wide contact patch.

Sizes

12.00	R 20	156/153K
11	R 22.5	148/145K
315/80	R 22.5	156/150K

ATTAR CITY A



All-weather tires designed for all types of bus and truck axles.

The model has reinforcement ribs, which provide for a wide contact patch. Three central ribs have diagonal notches, which improve grip on asphalt roads, as well as provide for water discharge.

- All-position model, which can be mounted on any axles, for commercial vehicles.
- Tires retain elasticity throughout the service life due to a special rubber compound.

Sizes

275/70 R 22.5 150/145J

ATTAR REG S



All-weather tires designed for truck steering axles, mainly for city and regional roads.

The tires provide for increased steering stability and precision of operation, reduced rolling resistance, steadiness to wearing and punctures. Tire tread has classical closed-type design, which comprises a combination of four circumferential grooves and thick shoulder blocks and provides for excellent operational characteristics.

- The tires are designed for steering axles of heavy vehicles.
- Tread pattern reduces rolling resistance and wear, ensuring sustainable grip and stable steering.

Sizes

295/80 R 22.5 152/148K
315/80 R 22.5 154/150K

ATTAR REG D



All-weather tires designed for truck driving axles, mainly for regional roads.

The tires are characterized by advanced hauling properties on wet and snowy roads, strength and robustness against strain. Excellent hauling properties are achieved due to massive tread blocks with wide transverse grooves of intricate shape.

- The tires are designed for driving axles of heavy vehicles.
- Custom-tailored rubber compound contributes to tread durability, ensuring rupture and damage resistance.
- Excellent steering stability at high speed due to optimized tread pattern, which improves hauling and gripping properties on wet and snowy roads.

Sizes

295/80 R 22.5 152/148K
315/80 R 22.5 154/150K

ATTAR REG T



All-weather tires designed for trailer axles of trucks for transportation on regional roads.

Reliable all-metal frame reinforced by solid cord is characterized by high strength, it reduces damage probability, which ensures long service life.

- The tires are designed especially for trailers used for commercial transportation.
- Optimized arrangement of tread blocks reduces rolling resistance and improves fuel efficiency.
- Reliable operation throughout the service life is achieved due to elasticity and solidity of rubber compound.

Sizes

385/65 R 22.5 160K

SPHERE OF APPLICATION

	Highway		Road/Off-Road	
	Regional	City	Mixed type	Off-road
All axles		Attar CITY A	Attar MIX 01 A	Attar OR A
Steering axle	Attar REG S			
Driving axle	Attar REG D			
Trailer	Attar REG T			

SPECIFICATIONS

Sizes	12.00R20	12.00R20	11R22.5	275/70R22.5
Model	Attar MIX 01 A	Attar OR A	Attar MIX 01 A	Attar CITY A
Recommended axle	All-position	All-position	All-position	All-position
Acceptable axle	—	—	—	—
Carrying capacity index	156/153	156/153	148/145	150/145
Speed category index	K	F	K	J
Pressure index PSI	123	123	123	130
Structure	Radial	Radial	Radial	Radial
Design	Tube-type	Tube-type	Tubeless	Tubeless
Frame and breaker structure	All-metal frame	All-metal frame	All-metal frame	All-metal frame
Tread pattern	Universal	Off-road	Universal	Road
Pattern height, mm	16	16	16	13
Weight, kg	85	85	49	51
Max speed, km/h	110	80	110	100
Outer diameter, mm	1,122 ± 17	1,122 ± 17	1,050 ± 16	968 ± 15
Section width, mm	319	319	282	287
Static radius, mm	522 ± 8	528 ± 8	489 ± 7	448 ± 7
Max load on single wheels, kg	4,000	4,000	3,150	3,350
Max load on double wheels, kg	3,650	3,650	2,900	2,900
Internal pressure, kgf/cm ²	8.7	8.7	8.7	9.2
Recommended rim	8.5	8.5	8.25	8.25
Tire valve	—	—	YБ (universal, metal frame, tubeless, for light and cargo vehicles)	YБ (universal, metal frame, tubeless, for light and cargo vehicles)
Inner tube	12.00-20	12.00-20	—	—
Tire flap	7.7-20	7.7-20	—	—
Additional marking	M+S, POR	M+S, POR	M+S, POR	M+S

SPECIFICATIONS

Sizes	315/80R22.5	315/80R22.5	315/80R22.5	315/80R22.5	385/65R22.5
Model	Attar REG S	Attar REG D	Attar MIX 01 A	Attar OR A	Attar REG T
Recommended axle	Steering	Driving	All-position	All-position	Trailer
Acceptable axle	Driving	Steering	—	—	—
Carrying capacity index	154/150	154/150	156/150	156/150	160
Speed category index	K	K	K	F	K
Pressure index PSI	120	120	123	130	130
Structure	Radial	Radial	Radial	Radial	Radial
Design	Tubeless	Tubeless	Tubeless	Tubeless	Tubeless
Frame and breaker structure	All-metal frame	All-metal frame	All-metal frame	All-metal frame	All-metal frame
Tread pattern	Road	Road	Universal	Off-road	Road
Pattern height, mm	13	16	16	16	12
Weight, kg	62	64	62	67	68
Max speed, km/h	110	110	110	80	110
Outer diameter, mm	1,077 ± 16	1,077 ± 16	1,076 ± 16	1,079 ± 4	1,063 ± 16
Section width, mm	318	318	312	316	389
Static radius, mm	500 ± 8	500 ± 8	500 ± 8	507 ± 8	490 ± 7
Max load on single wheels, kg	3,750	3,750	4,000	4,000	4,500
Max load on double wheels, kg	3,350	3,350	3,350	3,350	-
Internal pressure, kgf/cm ²	8.4	8.4	8.7	9.2	9.2
Recommended rim	9	9	9	9	11.75
Tire valve	УБ (universal, metal frame, tubeless, for light and cargo vehicles)	УБ (universal, metal frame, tubeless, for light and cargo vehicles)	УБ (universal, metal frame, tubeless, for light and cargo vehicles)	УБ (universal, metal frame, tubeless, for light and cargo vehicles)	УБ (universal, metal frame, tubeless, for light and cargo vehicles)
Inner tube	—	—	—	—	—
Tire flap	—	—	—	—	—
Additional marking	M+S	M+S, POR	M+S, POR	M+S, POR	M+S



An innovative factory in the city of Saran was designed and built considering the cutting-edge engineering solutions in the tire industry. In 2024, the factory launched large-scale production of automobile, commercial, off-road and all-metal truck tires branded ATTAR.

International Certificates

The high-tech automated equipment installed at the factory was produced by the leading international companies, which had supplied equipment to the largest tire factories in the world.

Attar truck tires have an all-metal structure, which ensures excellent key load and speed characteristics, thus extending frame service life in comparison with combined-type tires.

Quality Control

An automated tire production process covers the full cycle: production of rubber compounds, components, tire assembly, vulcanization and product quality control.

High automation level and continuous monitoring at all production stages ensure high product quality on the ongoing basis. Rigorous criteria applied during the final quality inspection are based on time-proven experience of world-class tire manufacturers.