

**IRIS** **tyres**  
No matter the distance

**PRODUCT CATALOG 2020**

TOURING / 4X4 & SUV / LT / C



# INDUSTRIAL TIRE PRODUCTION COMPLEX

1<sup>st</sup> in Algeria



3<sup>rd</sup> in Africa



**100% Internal  
Manufacturing  
Process**

The advanced facilities of IRIS TYRES factory combined with the latest technologies and high-quality raw materials were an excellent starting point to create a new brand for international markets



Algerian manufacturing  
European technology

<b>CLASS</b>	LT Class 1 & 2	LT Class 1	SUV	Subcompact Compact Mid-Size	ECONOMY
<b>ECORIS</b>					●
<b>SEFAR</b>				●	
<b>AURES</b>			●		
<b>STORMY</b>		●			
<b>LANE</b>	●				

The design of the IRIS tire has been developed to guarantee better comfort, high rolling resistance, better wet grip and reduced noise level.

Thanks to our large and diversified range, our tire matches a wide variety of rims dimensions, while combining security, durability and safety.

# SEFAR

**RANGE**



SUBCOMPACT / COMPACT / MID-SIZE



**CATEGORY :**

TIRES FOR SUBCOMPACT / COMPACT / MID-SIZE



## ADVANTAGES OF THE **RANGE**

IRIS Sefar offers maximum balance for your cars.

It meets the driver's many demands smoothly and leaves no place for unpleasant surprises.

In addition to high wear resistance, this tyre provides a quiet and comfortable ride.



# SEFAR

## RANGE

### PRODUCT DATA SHEET

	Size	Tire width	Aspect Ratio	Rim size	Load Index	Speed Index
15"	185/55R15	185	55	15	86 XL	V
	205/65R15	205	65	15	94	V
	215/65R15	215	65	15	96	H
16"	205/55R16	205	55	16	94 XL	V
	205/60R16	205	60	16	96 XL	V
	215/45R16	215	45	16	90 XL	V
	215/55R16	215	55	16	97 XL	V
	215/60R16	215	60	16	99 XL	V
	215/65R16	215	65	16	102 XL	V
	205/45R17	205	45	17	88 XL	V
17"	205/50R17	205	50	17	93 XL	V
	215/40R17	215	40	17	87 XL	W
	225/45R17	225	45	17	94 XL	W
	225/40R18	225	40	18	92 XL	W
18"	235/35R19	235	35	19	91 XL	W
	255/35R19	255	35	19	96 XL	W

Tire size, technical data and product availability are subject to change.  
please refer to [www.iris-tyres.com](http://www.iris-tyres.com) for the most recent information



# ECORIS

**RANGE**

**ECONOMIC RANGE**



**CATEGORY :**  
TIRES FOR ECONOMIC RANGE



## ADVANTAGES OF THE **RANGE**

Designed to reduce the fuel consumption and keep safety with comfort on top. ECORIS range is perfect for city and long distance driving.



# ECORIS

## RANGE

### PRODUCT DATA SHEET

	Size	Tire width	Aspect Ratio	Rim size	Load Index	Speed Index
13"	145/70R13	145	70	13	71	T
	155/70R13	155	70	13	75	T
	155/80R13	155	80	13	79	T
	165/70R13	165	70	13	79	T
	175/70R13	175	70	13	82	T
14"	165/60R14	165	60	14	75	H
	165/70R14	165	70	14	81	T
	165/80R14	165	80	14	85	T
	175/65R14	175	65	14	86 XL	T
	175/70R14	175	70	14	88 XL	T
	175/80R14	175	80	14	88	T
	185/60R14	185	60	14	82	H
	185/65R14	185	65	14	86	H
	185/70R14	185	70	14	88	T
	185/80R14	185	80	14	91	T
15"	175/50R15	175	50	15	75	V
	175/65R15	175	65	15	88 XL	H
	185/60R15	185	60	15	88 XL	H
	185/65R15	185	65	15	92 XL	H
	195/65R15	195	65	15	95 XL	H
16"	195/55R16	195	55	16	87	V

Tire size, technical data and product availability are subject to change.  
please refer to [www.iris-tyres.com](http://www.iris-tyres.com) for the most recent information

# AURES

**RANGE**

SUV



**CATEGORY :**  
TIRES FOR SUV VEHICLES



## ADVANTAGES OF THE **RANGE**

IRIS AURES is designed to improve performance, ensure your safety and drive you far. Its modern sculpture has been designed to combine comfort and safety on all types of roads. The design of the IRIS AURES tire is optimised to make driving consistent and comfortable in all driving conditions.





# AURES

## RANGE

### PRODUCT DATA SHEET

	Size	Tire width	Aspect Ratio	Rim size	Load Index	Speed Index
15"	215/75R15	215	75	15	100	T
16"	215/70R16	215	70	16	100	H
	235/70R16	235	70	16	106	H
	265/70R16	265	70	16	112	H
17"	215/60R17	215	60	17	100 XL	H
	225/60R17	225	60	17	103 XL	V
	225/65R17	225	65	17	102	H
	235/65R17	235	65	17	108 XL	V
	245/65R17	245	65	17	111 XL	H

Tire size, technical data and product availability are subject to change.  
please refer to [www.iris-tyres.com](http://www.iris-tyres.com) for the most recent information



RANGE

# STORMY

Light Trucks



**CATEGORY :**  
TIRES FOR LIGHT TRUCKS CLASS 1



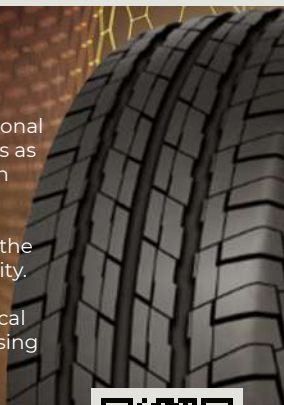
ADVANTAGES OF THE

**RANGE**

IRIS STORMY offers exceptional handling and control that is as reliable in the rain as it is on dry ground.

The optimized contours of the tyre give it a longer durability.

This means more economical driving without compromising your safety.



# STORMY

## RANGE

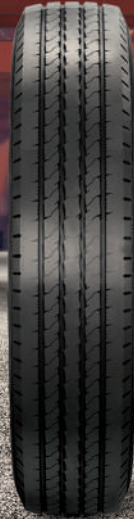
### PRODUCT DATA SHEET

	Size	Tire width	Aspect Ratio	Rim size	Load Index	Speed Index
14"	185/80R14C	185	80	14	102/100	R
	195/80R14C	195	80	14	106/104	R
15"	185/80R15C	185	80	15	103/101	R
	195/70R15C	195	70	15	104/102	S
	195/80R15C	195	80	15	106/104	R
	205/70R15C	205	70	15	106/104	S
	215/70R15C	215	70	15	109/107	S
16"	195/75R16C	195	75	16	107/105	S
	225/65R16C	225	65	16	112/110	S

Tire size, technical data and product availability are subject to change.  
please refer to [www.iris-tyres.com](http://www.iris-tyres.com) for the most recent information

# LANE

**RANGE**



Light Trucks



**CATEGORY :**

TIRES FOR LIGHT TRUCKS CLASS 2



ADVANTAGES OF THE

**RANGE**

The Commercial IRIS LT LANE is a tire that works as hard as you do, delivering all-season performance at an exceptional price.

This tire offers you an optimal and economical solution for all your daily challenges thanks to its durable sidewall.

Robust and economical, it offers the performance you need for your pickup truck while combining comfort and safety.



# LANE

## RANGE

### PRODUCT DATA SHEET

	Size	Tire width	Aspect Ratio	Rim size	Load Index	Speed Index
15"	7,00R15	7.00	-	15	111 / 109	N
	6,50R16	6.50	-	16	105 / 103	N
16"	7,00R16	7.00	100	16	113 / 112	N
	7,50R16	7.50	100	16	114 / 112	N

Tire size, technical data and product availability are subject to change.  
please refer to [www.iris-tyres.com](http://www.iris-tyres.com) for the most recent information

## INDOOR TESTING

Each tire passes through nearly 320 control points in order to provide a tire that complies with international norms and standards.



## EXTERNAL TESTS

As part of the company's quality policy, the performance of all IRIS tyres is measured according to the most rigorous European standards and tests in the world.

IRIS tyres were subject to an exclusive testing programme that included a complete set of braking and handling tests, wet testing and noise testing. The tires were tested on a variety of surfaces and conditions, such as serpentine, bumpy roads and aquaplaning, high and low temperatures.



It confirms that the tires will perform exactly as they should, every day and everywhere, in all conditions that drivers will face.



## IRIS TYRES PRODUCTION INDUSTRIAL COMPLEX

### summary



**Physical location**

Setif Industrial Zone, Algeria

**Area origin**

Concession of 51 160 m<sup>2</sup>

**Developed Area**

55 800 m<sup>2</sup> (multi-storey buildings)

90% of the technological partners are of European origin (mainly Germany, Italy, Finland ...) and some partners from USA .





## A young, motivated and qualified team

The IRIS product is made by the Algerians integrating European technology and know-how with international standards.

Every day, the 500 employees of this industrial complex participate in the development and production of IRIS tires while benefiting from the technology transfer and know-how of foreign partners.



IRIS has chosen to invest in a laboratory equipped with the latest technology and equipments.

IRIS believes in young Algerian engineers ability, whether in testing or developing the future tires of the brand.

Laboratory and R&D missions:

- Functional, performance and security testing.
- Control the product in its different production and post-production points.
- Research and development of new products.



## SPEED SYMBOLS

SPEED SYMBOL	MAX SPEED (KPH)	SPEED SYMBOL	MAX SPEED (KPH)
F	80	S	180
G	90	T	190
J	100	U	200
K	110	H	210
L	120	V	240
M	130	Z	240 +
N	140	W	270
P	150	Y	300
Q	160	(Y)	300 +
R	170		

## LOAD INDEX

Weight Index - Load	Max weight / tire KG	Weight Index - Load	Max weight / tire KG	Weight Index - Load	Max weight / tire KG	Weight Index - Load	Max weight / tire KG
68	315	79	437	90	600	101	825
69	325	80	450	91	615	102	850
70	335	81	462	92	630	103	875
71	345	82	475	93	650	104	900
72	355	83	487	94	670	105	925
73	365	84	500	95	690	106	950
74	375	85	515	96	710	107	975
75	387	86	530	97	730	108	1000
76	400	87	545	98	750	109	1030
77	412	88	560	99	775	110	1060
78	425	89	580	100	800	111	1090

## HOW TO READ TIRE SIZE

